



Energy





Energy

A burst of fresh Energy in our Avant Garde collection. This collection offers articles with creative, modern, trendy and coloured patterns and structures. Easily combinable with commercial plain type of articles.

Upholstery fabric Energy is based on natural patterns and shapes that surround us. The irregular high-low structure creates a vibrant dimension.

It's a heavy weight circular knitted textile with simultaneously lining that gives the fabric this solid look and feel. The fabric is piece dyed in a combination of natural and deep colours to express the burst of Energy.

This circular knitted quality has a few special characteristics, which are essential to communicate upfront, the most typical characteristic of this textile is the stretchability, in warp and weft direction, but also diagonal.

Energy is perfectly suitable for curvy fitted models.

Although the yarns are fine and knitted tightly, and it has a high martindale, it is still sensitive for damages by sharp (external) objects. A small ladder (such as known in pantyhoses) may occur when the fabric is damaged.

Machine-washable at 30 degrees Celsius and available in a wide and deep colour palette.

- Always be careful with sharp or rough objects such as watches, buckles or needles, as they may damage the fabric.
- Stretchability is a natural characteristic of this circular knitted quality.
- Seat depression is possible due to chenille yarns.
- We recommend to wash the cover inside out and immediately place the cover back to the piece of furniture, slightly damp, after washing.

***Textafoam originals** Established in 1970, this Dutch family business brings together craftsmen in textiles and furniture design to build an unrivalled portfolio in upholstery fabrics that meets buyer's needs every time. Featuring a wide colour range, ultimate value for money and excellent reliability in the supply chain.*

Composition

/ faceside 100%PES
/ backside n/a
/ knitwear

Suitable for

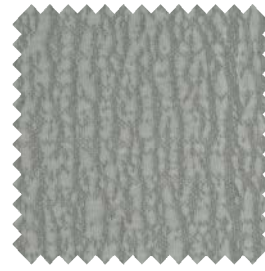
sofa's, beds, chairs with fitted and loose fitting upholstery



beige 05



burgundy 34



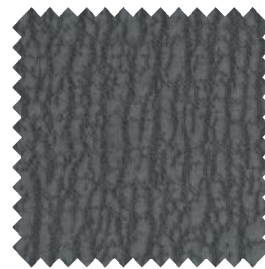
clay 84



denim 153



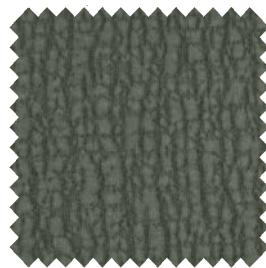
graphite 66



grey 65



hazel 96



hunter 156



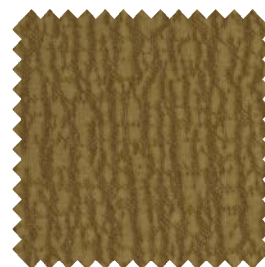
ivory 101



liver 10

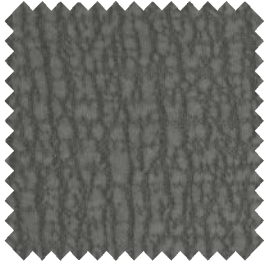


magnolia 160

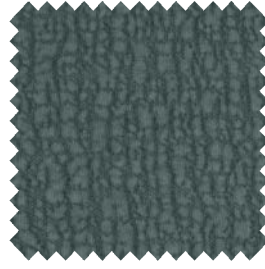


mustard 06

Please note: colours may vary according to your screen settings.



taupe 12



teal 198

Please note: colours may vary according to your screen settings.

Energy - Article passport

A circular knitted heavy quality with stretch and an irregular all-over design.

Available from stock in a wide range of contemporary and commercial colours.

Product characteristics

Productgroup	knitwear
Applications	sofa's, beds, chairs with fitted and loose fitting upholstery
Composition faceside	100%PES
Composition backside	n/a
Bonding / Coating	n/a
Statistic code	60019200
Dyeing method	piece dyed
Available colours	14
Packaging	bubble wrap

Durability specifications

Test	Test specification	Executed by laboratory:	Unit	Testresult		Norm RAL GZ 430/4:2019-01		Norm DIN EN 14 465:2006-09
				Dry	Wet	DGM	DGM+	
Abrasion resistance - yarn breakage	DIN EN ISO 12947-1:2007-04, DIN EN ISO 12947-2:2017-03	CTL	cycles	>100.000		min. 20.000	min. 40.000	A
Pilling	DIN EN ISO 12945-2:2000-11. 2000 cycles	CTL	grade	5		min. 3-4	min. 4	A
Colour fastness to light	DIN EN ISO 105-BO2:2014-11. Process 3, exposure level 5							
	light colours	CTL	grade	5		min. 4	min.5	B
	middle colours	CTL	grade	5		min. 4	min.5	B
Colour fastness to rubbing	DIN EN ISO 105-X12:2016-11							
	light colours	CTL	grade	4-5	5	dry: 4, wet: 3	dry: > 4, wet: 3-4	A/A
	middle colours	CTL	grade	5	4-55	dry: 4, wet: 3	dry: > 4, wet: 3-4	A/A
Colour fastness to rubbing	dark colours	CTL	grade	4-5	4-5	dry: 4, wet: 3	dry: > 4, wet: 3-4	A/A
	Ignitability (cigarette test)	BS 5852 part 1 (1979) from The Furniture and Furnishing (Fire) (Safety) regulations: 1988 No. 1324. Schedule 4 part 1 Ignition source 0: cigarette	CTL	passed				

Processing specifications

Minimum workable width in centimeters	± 138							
Roll length in meters	± 20							
Material weight in grams per linear meter	± 990							
Test	Test specification	Executed by laboratory:	Unit	Testresult		Norm RAL GZ 430/4:2019-01		Norm DIN EN 14 465:2006-09
				Warp	Weft	DGM	DGM+	
Tensile strength	DIN EN ISO 13934-1:2013-08	CTL	Newton	593	2.204	min. 350	min. 400	B/A
Tear growth resistance	DIN EN ISO 13937-3:2000-06	CTL	Newton	79,5	117,3	min. 25	min. 30	A/A
Resistance to seam slippage	DIN EN ISO 13936-2:2004-07. Load 180 N	CTL	mm	1,7	1,0	max. 5	max. 4	A/A
Delamination	DIN 53530:1981-02	CTL	Newton	n/a	n/a	n/a	n/a	n/a
Chemical substances	REACH	Centexbel	passed					
	Oeko-Tex, product class II	Centexbel	certified					

Cleaning specifications

Test	Test specification	Executed by laboratory:	Unit	Testresult		Norm RAL GZ 430/4:2019-01		Norm DIN EN 14 465:2006-09
				Warp	Weft	DGM	DGM+	
Dimensional change for washing 30 degrees celcius / air drying	DIN EN ISO 5077:2008-04, DIN EN ISO 6330:2013-02, DIN EN ISO 3759:2011-08	CTL	%	-1,6	0,0	n/a	n/a	A/A

- We recommend to wash the cover inside out and immediately place the cover back to the piece of furniture, slightly damp, after washing.



Textaafoam
Expect what's next in furniture fabrics

Textaafoam b.v.
La Défense 11 | 5026 SC Tilburg
P.O. Box 12 | 5050 AA Goirle
The Netherlands

T +31(0)13 534 5934
F +31(0)13 534 7586
E info@textaafoam.nl
www.textaafoam.nl